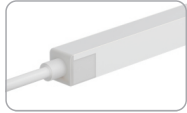
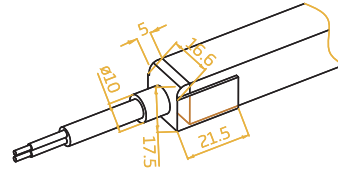


Silicone Injection-moulded Front Connector-End



FXN - 1617 - C - SIM - FE

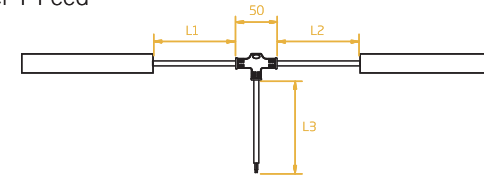


Silicone Injection-moulded Middle Connector & Power T-Feed

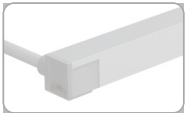


FXN - 1617 - C - SIM - TF

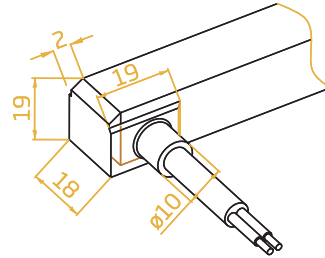
L1 and L2 available in 300mm.
L3 available in 300mm/1000mm/3000mm.



Silicone Injection-moulded Front Connector-Side



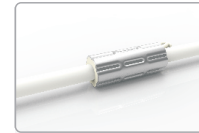
FXN - 1617 - C - SIM - FS



Note:

1. Unless otherwise stated, the tolerance of the connector is $\pm 0.5\text{mm}$;
2. To avoid damage from excessive force on cable joint, please keep at least 60mm of cable ahead in the natural state.

Anti-wicking Ferrule

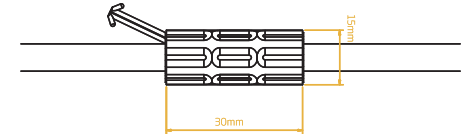


The anti-wicking ferrule is located at 115mm ($\pm 10\text{mm}$ tolerance) from the connector on the cable.

For protection against water ingress from inside of cable wire and hence damage the light.

Note:

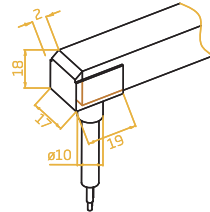
1. Unless otherwise stated, the tolerance is $\pm 0.5\text{mm}$.
2. The removal of anti-wicking ferrule will void the warranty if any water ingress caused by it.



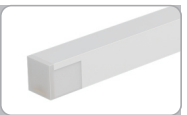
Silicone Injection-moulded Front Connector -Bottom



FXN - 1617 - C - SIM - FB



Silicone Injection-moulded End Cap



FXN - 1617 - C - SIM - EC

